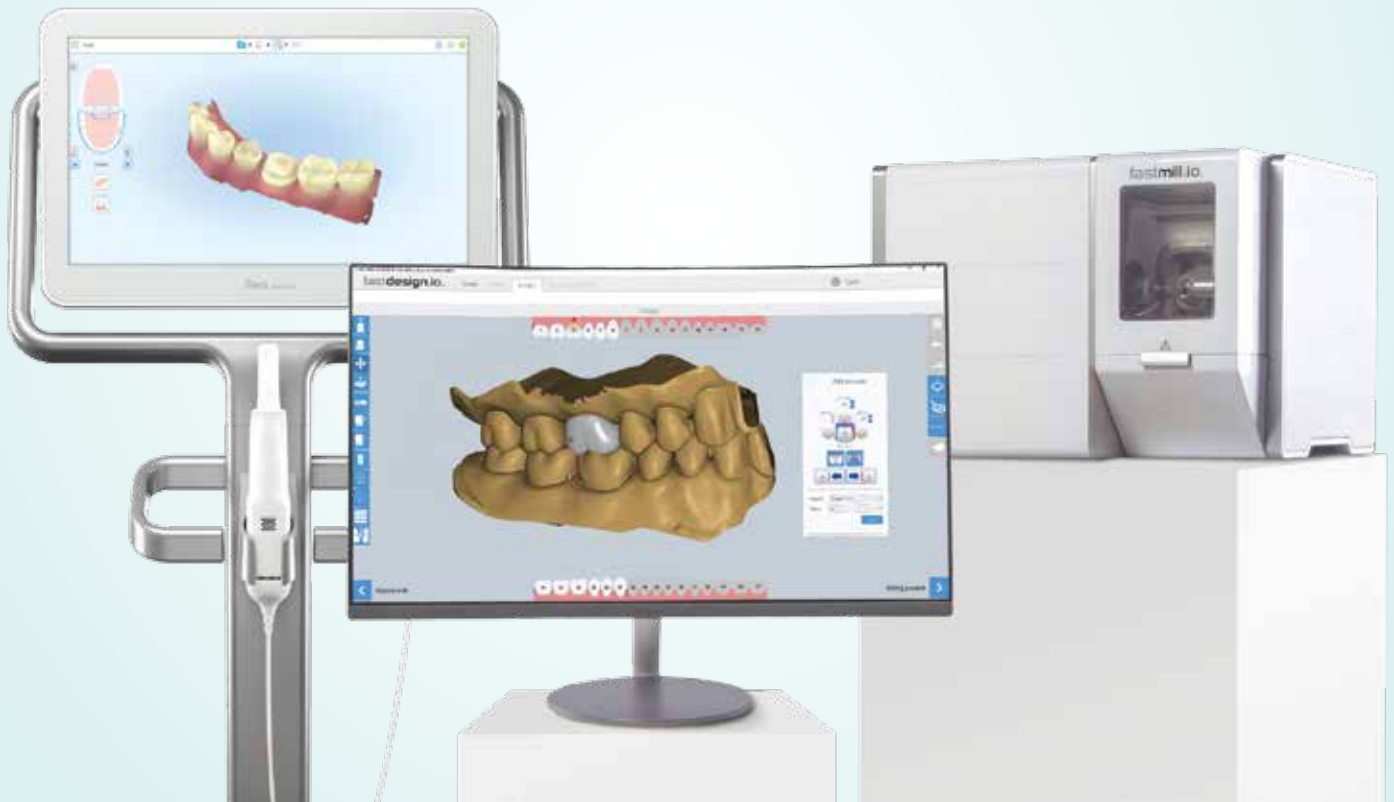


Product Spotlight:

glidewell.io™ In-Office Solution



Reprinted from Chairside Magazine Volume 13 Issue 1

The glidewell.io™ In-Office Solution makes one-appointment restorative dentistry simple, flexible and affordable. This chairside digital workflow is facilitated by powerful technologies, including the iTero Element® Intraoral Scanner from Align Technology, Inc. (San Jose, Calif.), and the fastdesign.io™ Software and fastmill.io™ In-Office Unit from Glidewell Dental. Through the glidewell.io Solution, clinicians gain the ability to quickly create restorations in the office or submit cases to the lab as needed — all from a single interface.

PROVEN, EASY-TO-USE TECHNOLOGIES

The technologies that comprise the glidewell.io Solution represent an extension of tools and processes proven throughout years of use by Glidewell Laboratories. Though the scale of these systems has been reduced to accommodate a chairside footprint, their power and precision still mirror that of their laboratory counterparts.

For instance, the fastdesign.io Software, which serves as the design component of the glidewell.io Solution, uses artificial intelligence to automate much of the process. Pulling morphological knowledge from millions of clinician-approved Glidewell cases, the software auto-generates a restorative design based on those preapproved parameters and customizes it to the preparation.

“ The glidewell.io Solution offers multiple solutions for the challenges of everyday dentistry ... ”

From there, the experience can be as simple as desired, requiring minimal clicks to send the digital design to the milling unit. For clinicians who desire significant input in the customization process, the software also allows for an in-depth design experience where every aspect of the morphology can be refined. On the whole, the glidewell.io user does not have to be a laboratory technician to achieve great results.

The philosophy behind all components of the glidewell.io system matches that of the design software: Make the technology powerful, easy to use, and

altogether beneficial to both dentist and patient.

EXPANDED TREATMENT OPTIONS FOR EVERYDAY DENTISTRY

The flexibility of the glidewell.io Solution makes it uniquely suited to address the everyday realities of providing care, including patients' limited availability to return to the dental office to receive the dental restoration. When the patient requires restorative care, the practitioner captures a digital impression using the iTero Element scanner, with the impression data seamlessly transferring



The fastdesign.io Software generates restorative designs using algorithms that are informed by millions of cases delivered by U.S. dentists. Here, Dr. Bruce LeBlanc of Morgan City, Louisiana, makes minor adjustments to an automatically generated crown design.



The glidewell.io Solution gives dentists a powerful, connected suite of CAD/CAM tools that satisfy the demands of everyday clinical routines.

“ The glidewell.io Solution offers myriad treatment pathways, each concluding with reliable restorative results. ”

to the fastdesign.io Software. Using the fastdesign.io interface, the clinician then selects the fabrication protocol; choosing between designing and milling completely in the office, sending the digital impression to Glidewell Laboratories, or a hybrid of the two. The options presented by the workflow provide the versatility required by today's practitioners.

Dentists who wish to offer single-appointment restorative treatment can mill a precise-fitting BruxZir® Solid Zirconia crown in under 45 minutes with the glidewell.io Solution. In situations where one-day treatment isn't ideal, the dentist can use the glidewell.io tool set to create an accurate digital impression and prescribe a restoration through the lab, with the option of creating a BioTemps® provisional in less than 10 minutes with the fastmill.io In-Office Unit.

The glidewell.io Solution offers myriad treatment pathways, each concluding

with reliable restorative results. Whether one-appointment crowns or more complex laboratory-fabricated prostheses are needed, the glidewell.io ecosystem facilitates an expansive range of treatment options and support from a single interface.



LEARN MORE

Learn more about the most affordable in-office solution, visit glidewell.io

“ The glidewell.io Solution offers multiple solutions for the challenges of everyday dentistry ... ”

EXTRAORDINARY CAPABILITIES IN AN AFFORDABLE PACKAGE

The glidewell.io Solution offers access to same-appointment BruxZir crowns and a direct link to the restorative experts at Glidewell Laboratories at a price point that is well below that of current systems. With a complete glidewell.io package priced at just \$79,990 including the iTero Element intraoral scanner, this system represents the most accessible means of empowering the dental practice with digital capabilities. Additionally, monthly financing options are available to ensure that all interested clinicians can realize the advantages of the glidewell.io In-Office Solution.

Included with the purchase of any

glidewell.io package is in-office training and setup performed by Glidewell Dental knowledge experts, minimizing any learning curve and ensuring that the dental practice can begin to experience the power of digital dentistry as soon as possible.

SIMPLE. FLEXIBLE. AFFORDABLE.

The glidewell.io Solution offers multiple solutions for the challenges of everyday dentistry by bringing together the expertise of Align Technology and Glidewell Dental. The system centers on usability for the dental practitioner, being easy to learn, economically viable and supported by seasoned laboratory technicians. With these qualities, the glidewell.io ecosystem is the simplest way to begin offering same-appointment crowns. **CM**



WATCH ONLINE
Hear about glidewell.io from an expert CAD/CAM dentist. See the video at chairsidemagazine.com