

Obsidian[®] **NOW**

NEW!

Quick Start Guide



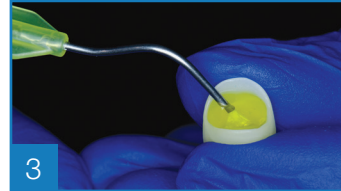
Crown Side:



1 Remove from block



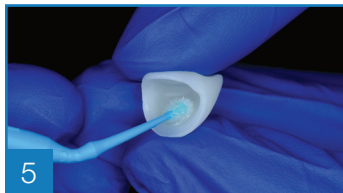
2 Remove and polish sprue attachment



3 Scrub with 5% hydrofluoric acid for 20 seconds

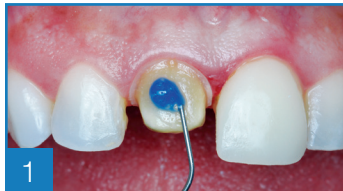


4 Rinse and dry



5 Apply silane, Let sit and dry

Tooth Side:



1 Etch tooth with phosphoric acid



2 Rinse tooth, do not desiccate tooth

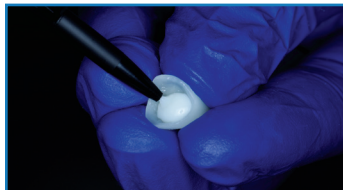


3 Apply desensitizer, air thin. Do not dessicate



4 Apply bonding agent, air thin. Do not light cure

Delivery:



1 Resin cement in crown to bond

For more information
glidewelldental.com | 844-949-7184



for the sake of smiles

PK-5208452-081524